



Twin rotor rakes
GA 1001 - 1002 - 1030 - 1031 - 1031 CL - 1031+ - 1032+





Contents

- | | | | |
|--------------|--|--------------|---|
| 04-05 | Neat raking and clean forage | 18-19 | The benefits of side delivery rakes |
| 06-07 | The MASTER DRIVE GIII gearbox | 20-21 | GA 6002 |
| 08-09 | The benefits of central delivery rakes | 22-25 | GA 6632+, GA 7932+ and GA 9032+ |
| 10-11 | GA 6501, GA 6501 P and GA 7501+ | 26-27 | GA 6930, GA 7530 and GA 8830 |
| 12-13 | GA 7631, GA 8131 and GA 8131 CL | 28-29 | GA 8030 |
| 14-15 | GA 8131 CL | 30 | Technical specifications for central delivery rakes |
| 16-17 | GA 8731+ and GA 9531+ | 31 | Technical specifications for side delivery rakes |
-

GA

Twin rotor rakes

GYRORAKES DESIGNED TO HARVEST FORAGE ABUZZ WITH NUTRIENTS

A HIGH NUTRIENT CONTENT IN THE CROP HAS ALWAYS BEEN A CRUCIAL POINT FOR KUHN GYRORAKE DEVELOPERS. THEY HAVE PAID GREAT ATTENTION TO EVEN GROUND CONTOUR FOLLOWING AND COMPLETE PICK-UP OF A CLEAN CROP. THE SPECIFICALLY SHAPED TINE ARMS ENSURE HIGH WORK OUTPUT, PERFECTLY STRUCTURED WINDROWS AND HIGH RELIABILITY.



RAKES SUITABLE FOR HEAVY-DUTY USE

The MASTER DRIVE GIII double reduction rotor, with a drive system that can handle heavy forage, increases the machine's service life. This drive system, unique on the market, is designed for intensive use and makes this range more versatile and reliable.

FIND A RAKE TO MATCH YOUR NEEDS

With working widths of 3.50 to 9.30 m, models with central or side delivery (one or two windrows), semi-mounted or trailed versions... the range of KUHN Gyorakes meets most requirements.

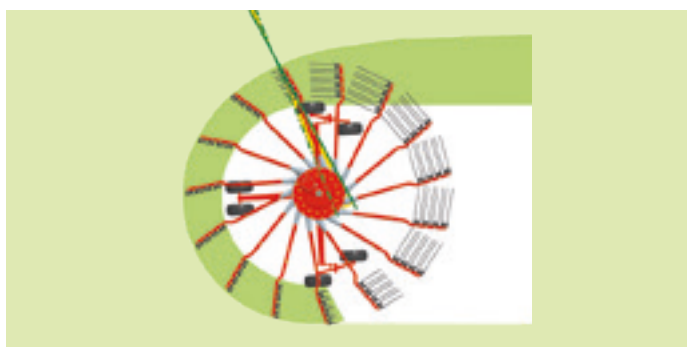
NEAT RAKING AND CLEAN FORAGE

For quicker drying and optimum pick-up, uniform and fluffy windrows are on great demand.

Two features of KUHN gyrorakes contribute to ideal forage delivery:

- tine arms with positive forward angle until the point at which they deliver the forage onto the windrow,
- fast tine raising at the very last moment before going over the windrow.

In addition to these features, KUHN gyrorakes boast double curved hyper-tangential mounted tine arms. These advantages make all the difference!

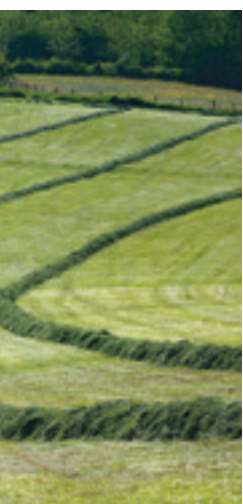


The benefits of the concept at a glance

Hyper-tangential tine arms improve windrow formation considerably:

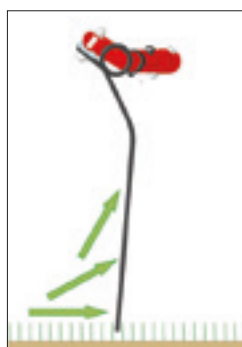
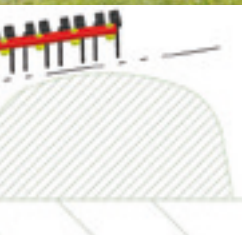
- larger and fluffier windrows are formed;
- crop is pushed effectively towards the outside of the rotor, towards the windrow;
- the fluffy windrows are easier for the baler or forage harvester to pick up, and with minimum loss;
- high tine clearance prevents crop from being pulled out of the formed windrow;
- the shorter distance between tine passages produces high quality raking, even at higher speeds.





TINE ARMS FOR HIGH-QUALITY RAKING

The hyper-tangential tine arms provide cleaner raking, improved windrow formation, and increased ground speeds compared to other tine arm mounting designs. They eliminate the need for additional tine arms or adjustable cams. Moreover, the distance between tine passes is significantly reduced so there is less risk of forage being left unranked. Losses are reduced to a minimum, even at high working speeds.



A proven tine design for clean forage

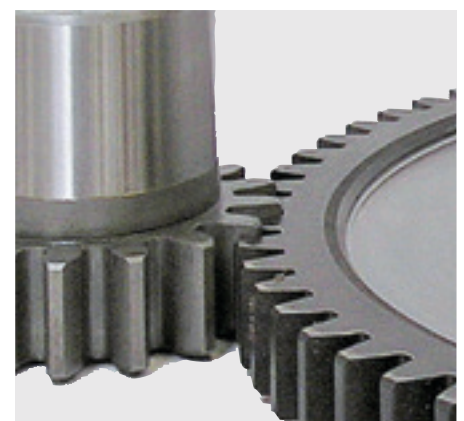
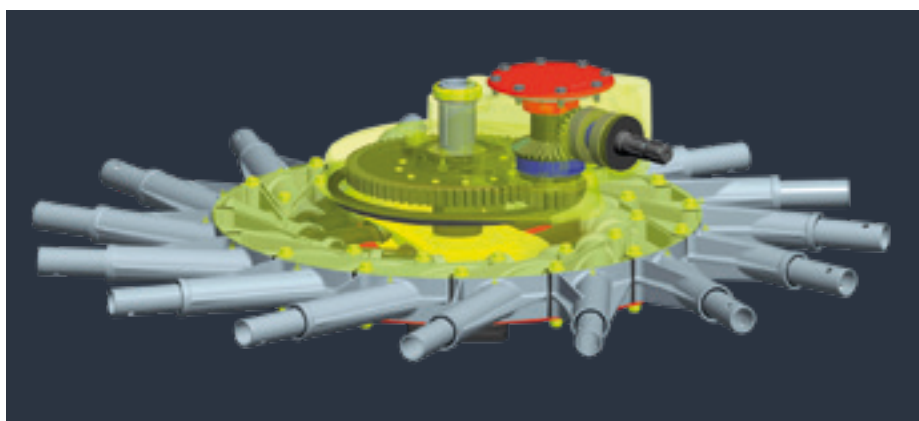
The tine angle provides clean raking and gentle handling of the crop with minimal ground contact, even in heavy or dense forage. The tines are made of heat-treated steel so their service life is optimised and the resistance to fatigue increased. The “floating” tine attachment system featuring three large-diameter coils, also reduces the risk of wear.

THE MASTER DRIVE GIII GEARBOX CAPABLE OF HANDLING EXTREMELY THICK CROPS

Today's agricultural machines with larger working widths, have to withstand considerable stress. They also have to meet farmers' demands for reliable, long-lasting machines. The core of a Gyrorake, is the rotor drive system. That's why KUHN has developed fully enclosed gearboxes for total protection of the drive components that are less subject to wear. The generation III MASTER DRIVE gearbox has been designed to handle ever increasing stress on the drive chain to ensure exceptional machine reliability and longevity:

It is made for:

- larger working widths and rotor diameters,
- raking difficult crops such as silage, haylage, straw and hay.

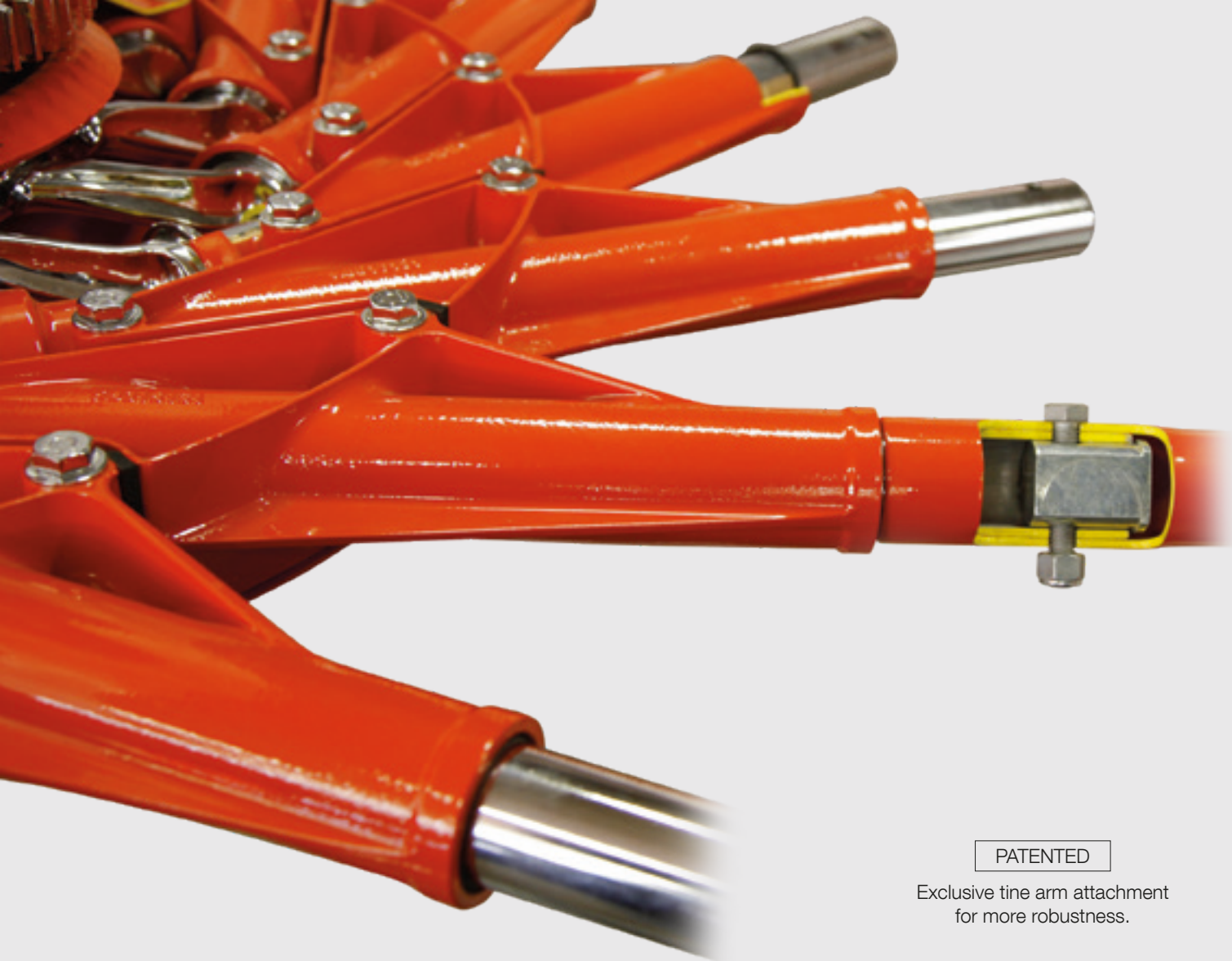


EXCLUSIVE

For increased service life

The exclusively designed MASTER DRIVE GIII gearbox has two-stage reduction with bevel and cylindrical gears. Tolerances are tightly controlled making the whole assembly more robust and reliable, even in difficult conditions. As a result, wear on the gearwheels is reduced to a minimum and no maintenance is required. The two stages also make it possible to include bigger cylindrical gears with more teeth, for improved power transmission.

High-performance power transmission for difficult plot conditions and heavy loads.



PATENTED

Exclusive tine arm attachment for more robustness.



Designed to last

- Important modifications have been made to obtain lighter, yet more robust rotors:
- heavy-duty central shaft,
 - optimised cam track and larger roller diameter: reduced rotation speed, less pressure on the cam,
 - 45 mm pivoting shaft with forged and welded crank pin (no roll pins) and large lever: sturdier shaft and low pressure on the roller,
 - aluminium bearings for lighter weight,
 - bearing fitted to the gearbox with 2 screws: fast removal in case of accident,
 - exclusive and extremely durable internal-thread mounting of the pivoting shaft to the arm.



APPRECIATED BY THE MOST DEMANDING

You have to be efficient and effective when harvesting fodder. The MASTER DRIVE GIII gearbox makes the most of the weather conditions, especially for large farms, machinery cooperatives and contractors.

GA 1001 | 1031 |
1031 CL | 1031+

WHAT ARE THE BENEFITS OF KUHN GYRORAKES WITH CENTRAL DELIVERY?

They are simple but effective

You can double the productivity of a single-rotor rake and produce windrows sized to meet the requirements of high capacity balers, choppers and loader wagons.

They form immaculate windrows

The distance between rotors is maintained regardless of ground contours. Thus, windrows have a uniform and even structure maximising aeration, and are perfectly suited to the baler pickup operation which follows.

Their work output is high

The rotors are designed to move large quantities of forage at high working speeds.

They help preserve crop nutrients

The forage is moved gently and only once, resulting in very little leaf loss and only limited risk of ground contamination.





GA 6501 | 6501 P | 7501+

WHEN FARM SIZES INCREASE

Single-rotor rakes are pushed to their limits on farms with continuously increasing grassland areas. That's why a twin rotor machine with higher output but just as compact as the single-rotor rake is just what you are looking for. Not only do the GA 6501, 6501 P and 7501+ have all the features of a professional rake, they also come at a reasonable price. They are exactly what you need!



Compact rakes easy to manoeuvre

Moving these machines from one plot to another is easy with their reduced transport width of 2.50 or 2.55 m depending on the model. Switching from transport to work mode is done from the cab with the rake's integrated lift system. Hydraulic rotor lift facilitates U-turns and provides high clearance at headlands.

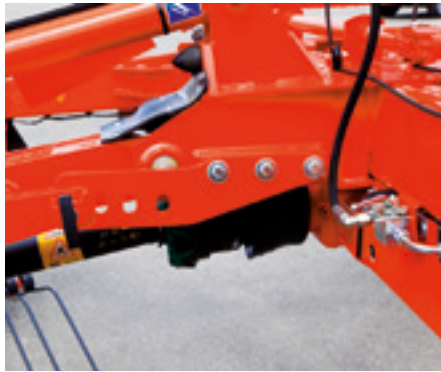
The fixed headstock and four pivoting wheels guide the rotor with maximum stability on bends. The GA 7501 + model includes a pivoting headstock to provide greater travel range.

Opt for the mounted model: the GA 6501 P

This mounted model is suitable for farmers wishing to benefit from the manoeuvrability of a mounted machine and the large working width of a twin rotor. Working width is adjustable from 5.55 to 6.40m by increasing the space between the rotors. It also provides all the great features cited below.



GA 6501 / 6501 P



GA 7501+, mechanical setting



GA 7501+, hydraulic setting

Take advantage of their simplicity

Working speeds are higher than with a single-rotor rake due to larger working widths. The width of the windrow is easily adaptable to the amount of crop and the harvesting machine that follows. Just turn the crank handle on the GA 6501 and 6501 P to adjust windrow width to up to 2.00m. The GA 7501+ has a 4-position selector as standard, to change windrow width, or an in-cab continuous hydraulic adjustment system available as an option. The rotors can be lifted simultaneously via the tractor's single-acting valve, or individually. Time is saved on transport too as transport height is reduced without having to remove the arms.



Demand quality raking even on hills

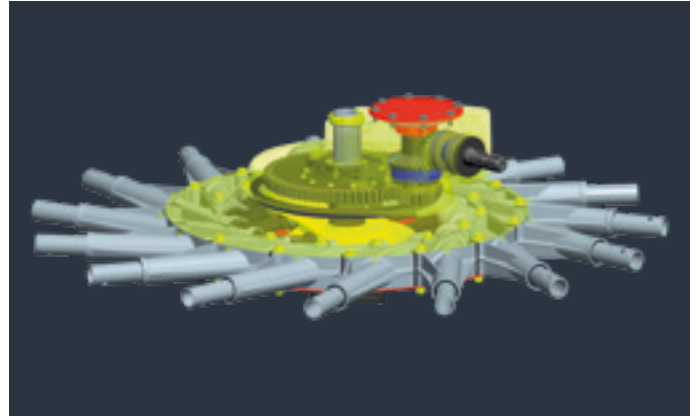
For fast crop drying and easy pick-up by the baler, windrows need to be uniform in shape and volume. With 3D rotor articulation and wheels fitted as close as possible to the rotors, the rake smoothly follows uneven ground without damaging the sward. These features also prevent dirt getting into the forage.

The bogie axle in addition to the 3D axle (as an option) is ideal for rotor guidance in difficult conditions (ruts, rough grassland....) and at high ground speeds. So opt for the GA 7501+.

GA 7631 | 8131 | 8131 CL

RAKE TO MEASURE!

KUHN's wide range of semi-mounted rakes with central delivery, i.e., GA 7631, 8131, and 8131 CL, provides farmers with three tools adapted to many different situations. These machines have a wide choice of equipment and large working widths (7.50 for the GA 7631 model and 8.00 m for the GA 8131 and GA 8131 CL models). They are simple to operate and adapted to all types of medium to large farms.



Well formed windrows...

Pass over windrows without damaging them thanks to the 43 to 70 cm ground clearance, depending on working width adjustment. The rotor is fitted so that it touches down at the rear first, and the sward is protected.

... Even during intensive use

The MASTER DRIVE Gill gearbox can handle increasingly intensive jobs in dense and thick forage.





CUSTOMISE YOUR MACHINE TO YOUR FARM

Hydraulic working width and windrow width adjustment come as standard, and there are many options available to meet the needs of your farm.



Control the following functions with the KGA 01S electric control box:

- Individual rotor lift.
- Individual hydraulic adjustment of raking height (additional DA valve required).



Reduce soil compaction with wide wheels and benefit from a transport width less than 3m.



The optional bogie axle under the rotor, with 6 wheels close to the tines, ensures optimised ground contouring.



Take advantage of the hydraulic windrow curtain, indexed to the rotor lift.

RAKE ALL OF THE CROP

The GA 8131 CL twin-rotor rake completes the semi-mounted range of rakes with central delivery. In addition to the features present on the other models, this machine has an extra exclusive feature for even higher quality forage: A central crop lifter. This rake adapts to different types of crop such as green forage intended for silage or wrapping, or for harvesting dry products such as alfalfa (with no leaf loss).

A pick-up lift system that handles all the forage

The GA 8131 CL rake is an exclusive model on the market and meets the expectations of the most demanding customers in terms of forage quality. It is equipped with a crop lifter positioned in front of the rotors. The lifter lifts and aerates the forage present in the central area which is not raked with a «conventional» rake. Drying is then optimized and the final product is of higher quality. It is simple to operate with automatic lifting and lowering of the central crop lifter during headland turn manoeuvres.



PATENTED

An innovative pick-up

A large 1.80 m drum aerates the forage that is not raked by the two rotors. Its large diameter (460 mm) makes it possible to work large volumes of forage. The drum and 4 rows of tines are driven hydraulically. The crop is lifted and moved gently without leaf loss.

A nice even windrow with no leaf loss

The deflector creates a nice even windrow. Adjustments such as the rotor speed or deflector position make it possible to adapt raking to the type of crop. Consequently, the risk of leaf loss is eliminated, and work output remains constant.



Great ground following

A large vertical (from -200 to + 474 mm) and angular (from -4° to +4°) travel range enables the crop lifter to adapt to uneven ground perfectly. Pivoting gauge wheels at each side of the pick-up make the tool easy to manoeuvre on bends. This high-performance and flexible model picks up all of the forage.

So simple

The lifter raising and lowering for headland turn is indexed to the rotors, so the operator only has one job to do. It is practical and saves time! For transport, the lifter is integrated perfectly into the machine's dimensions. High ground clearance allows for safe travel.

GA 8731+ | 9531+

PREPARED FOR INTENSIVE USE IN SILAGE, HAY OR STRAW

Semi-mounted GA 8731+ and GA 9531+ gyrorakes are more robust and reliable, and adapt to plot conditions better than competitor models. With working widths from 7.70 to 9.30 m, work output is high and the undercarriage keeps the rotors parallel on rough ground. Being equipped with the MASTER DRIVE Gill rotor drive, this range is designed to operate in difficult conditions.



Ready for thick forage

The rotors on KUH N gyrorakes are equipped with the latest generation MASTER DRIVE Gill gearbox which greatly increases the machine's reliability and raking quality.



Exceptional raking quality

Ground adaptation as you would expect: four wheels close to the tines on each rotor and 3D suspension which give the GA 8731+ rotors superior ground following capacities for quality raking.



Windrows are safe

If necessary, rotors can be tilted individually to an angle of up to 40° with a possible clearance of more than 75 cm. So there is no need to worry about windrow finish anymore when you pass over them.

EASE OF USE AND SETTING

Transport height less than four metres

A practical asset of the GA 8731+: No need to remove the arms for a transport height of 4.00m .



Rotors locked for transport

Rotors are locked hydraulically and mechanically in their transport position by the exclusive STABILIFT device, preventing the rotors from moving. This considerably increases the machine's stability during transport on poorly-maintained roads, but also when passing over windrows.



Height adjustment is so easy

All you need is a crank to change the rotor height manually. A standard graduated plate on the machine further facilitates adjustments. Hydraulic height adjustment is available as an option with the KGA 04C control box.



Six wheels per rotor as standard

For improved ground following, the GA 9531+ features six wheels per rotor. An additional bogie axle is also available on the GA 8731+ rake.



The KGA 04C control box simplifies your manoeuvres. It is easy to set the rake to work/transport position, adjust raking height hydraulically, and raise the rotors individually.

GA 1002 | 1030 | 1032+

WHY CHOOSE A GYRORAKE WITH SIDE DELIVERY?

Because it adapts perfectly to diverse and varied conditions! There are trailed and semi-mounted versions with central frame and carriage available. Both have their strong points.



Managing different crop densities

Depending on the density, you can control the volume of crop in the windrow. Rake individual windrows or combine the crop from two passes to form one windrow. Or simply adjust the working width to produce the best windrow size possible. Result: The output of the baling and harvesting equipment is optimised.

One or two windrows? Your choice!

With most models, either one or two separate windrows can be delivered. You will particularly appreciate this versatility when wanting to turn two windrows simultaneously, for quicker drying, or to produce night windrows quickly. Delivering two windrows also accelerates the drying process of heavy forage.



The trailed models:

- couple to the tractor quickly and easily: no lift required, only a drawbar,
- variable raking widths for perfect raking in narrow areas,
- rear rotor position is set from the tractor cab: select work or transport position, delivery mode (one or two windrows) and raking width,
- a great price for such working widths,
- MASTER DRIVE GIII rotor drive,
- large clearance for passing over windrows.

The semi-mounted models:

- excellent tracking and stability on uneven ground.
- great manoeuvrability: follows the tractor precisely thanks to rear wheel steering making it easier to handle (for example when reversing).
- reduced dimensions in transport position without removing the tine arms.
- simple folding to transport position.
- easier to adjust, so more manageable by less experienced operators.

EASY TO USE AND MANOEUVRE

In the category of large width rakes, the 6002 model perfectly meets the concerns of your farm: increased harvesting rates and enhancement of a low or medium power tractor.



Turning angle exceeding 90°!

The GA 6002 rake is capable of picking up all the forage on bends and even during U-turns, without having to compensate for the position of the rear rotor: a major advantage for comfort and ease of use.

Simple and safe transport:

- the automatic lock prevents the rear wheel set from pivoting,
- when the rake is unfolded in the field, the safety unlocks automatically,
- lighting and signaling are fitted as standard,
- it is not necessary to disassemble the tine arms.

MANAGE DIFFERENT FORAGE VOLUMES AND DENSITIES

The raking width is hydraulically adjustable from 3.00 to 5.80 m.

Variable forage densities, avoiding obstacles and plot finish are no longer an issue.

For very dense forage or to make night windrows, the GA machine can also deliver two windrows at each pass.



Automatic positioning of the windrow deflector

When the rake moves into working position, a connecting rod system automatically deploys the windrow deflector to a predetermined position. This position is easily adjustable using a simple crank. Optional equipment: windrow deflector for the front rotor.



Hydraulic lift

Each rotor is equipped with a cylinder which provides significant ground clearance. A crank allows you to preset the ideal working height.



Machine windrowing quality and stability

They are ensured, even at high speed and on uneven terrain!
By pivoting, the tandem axles follow closely ground contours. Tandem axles are available as optional equipment.

Possibility of complementary axles

The complementary axles, available as optional equipment, improve the machine's ground following, and thus its balance on very uneven terrain.

Drawbar with parallelogram

Practical: it avoids any risk of blockage with the hitch clevis during tractor maneuvers.

MADE FOR TOUGH CONDITIONS

Designed for small and medium farms with difficult working conditions, GA 6632+, GA 7932+ and GA 9032+ side delivery rakes can be coupled to low-powered tractors and will surprise you by their versatility and performance. The position of the rear rotor of these trailed rakes can be modified to provide variable working widths. Other key features include the wide choice of rotor diameter, the MASTER DRIVE GIII gearbox for ever intensifying operations, many raking possibilities, great ground contouring, and more!



GA 6632+

- for medium farms,
- for intensive use ,
- with small rotors for improved ground following,
- transport width under 3.00 m (9'10"),
- width only 2.08 m (6'9") with tine arms removed.



GA 7932+

- the best choice if a 3.50 m transport width is authorised on the road,
- windrow width suited to high-capacity balers,
- very good price/working width ratio.



GA 9032+

- The largest side-delivery rake on the market,
- Working width reaching 8.80 m in two-windrow position,
- Unbeatable price/working width ratio.



Ensured reliability

These three rakes feature:

- a new link component between the rear rotor and the chassis,
- guidance system and lubrication in the pivoting GYRODINE headstock,
- a free wheel integrated in the MASTER DRIVE GIII gearbox, as standard.

These three features ensure a reliable machine made to last and capable of working in all your conditions.



Even more operating comfort

All three models come with standard lift sequencing between the front and rear rotors. A hydraulic limiter regulates the flow to the front rotor to optimise sequencing and lowering. An accumulator has been added which lifts the rear rotor at just the right moment. The new cranks are easier to handle thus facilitating adjustments.



IMPORTANT ASSETS FOR MORE COMFORT



Hydraulic windrow width adjustment

A hydraulic cylinder allows windrow width to be adjusted easily from the cab. This system also allows fully folding the curtain upwards for transport, eliminating a demanding manual job. A second curtain can be fitted to the front rotor, as an option, when forming two windrows.



Superb windrow clearance

A high rotor-lift height of nearly 50 cm (22") for the GA 6632+ rake and 60 cm (24") for GA 7932+ and GA 9032+ models means that you can pass over windrows, no problem.



Parallelogram-type drawbar hitch

The rake has a very simple coupling system consisting of a drawbar with a height-adjustable parking stand. To avoid any interference with the tractor hitch system, the front part of the drawbar remains horizontal at all times irrespective of rotor height.

UNBEATABLE STABILITY!

In difficult conditions, on rough ground, good ground following capacity is essential for raking clean, top-quality forage. Find out how GA 6632+, GA 7932+ and GA 9032+ rakes fulfil this crucial criterion.

DESIGNED TO BE STABLE IN VARIOUS CONDITIONS

Very wide wheel sets and up to 6 wheels per rotor provide solid support allowing these 3 models to feel comfortable in various situations.



As standard

Two wheels fitted to the GA 6632+ rake's front rotor for great ground following.



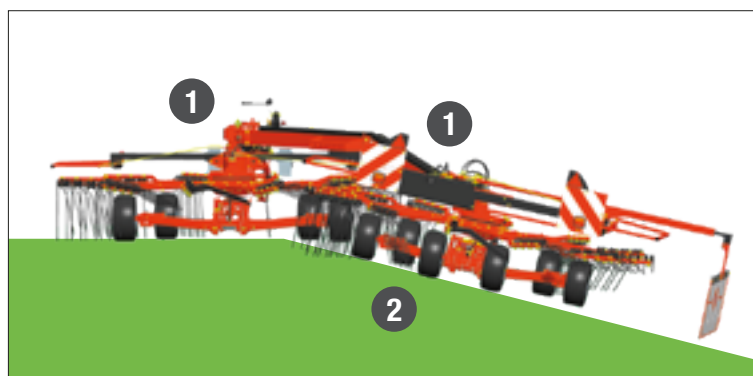
Bogie axles

Bogie axles are standard on GA 7932+ and GA 9032+ machines, and optional for the GA 6632+ model. They allow smooth running over potholes, as well as over uneven grassland (due to damage caused by game, for example, or after use as pasture).



Additional axle

The rear rotors on the three models are equipped, as standard, with two additional wheels. The additional axle is optional for the front rotor on GA 6632+ and GA 7932+ machines. It provides real stability on steep slopes.



Independent rotors

The pivot points located on the chassis (1), allow both rotors to follow ground contours independently. The rear rotor is equipped with 3D suspension, as standard, for even less forage contamination.

Hyperballoon wheels

The large diameter HYPERBALLOON wheels (2) positioned very closely to the raking zone provide excellent crop pickup with minimal contact with the soil. Practical: this prevents any interference with the drawbar coupling during tractor manoeuvres.



More stable on steep hills

A stabilising kit is available as an option to prevent tipping in very hilly areas. When in headland-turn position, oil from the lift circuit is sent into the two hydraulic cylinders on the drawbar coupling system. This locks the system and holds the machine in place no matter how steep the hill is.

Wide for work, narrow for transport and storage!

Curtain lift is hydraulic so it's quick to set to transport mode for travelling to the neighbouring plot. The width of the GA 6632+ rake is thus reduced to 3.00 m, the GA 7932+ to 3.50 m, and the GA 9032+ model to 4.10 m. In addition, the three models feature removable arms for driving comfort and increased safety on long journeys. They are also easier to manage in storage areas that are difficult to access.

Option: Removable rear panels for the GA 6632+ rake to conform to road legislation in some countries without removing the arms. This also saves space for parking in the shed.



GA 6930 | 7530 | 8830

MADE TO MEASURE FOR YOUR FARM...

The GA 6930, GA 7530 and GA 8830 models complete the range of semi-mounted rakes with side delivery. They are simple and practical to operate, and suit medium and large farms perfectly with their working widths that reach 6.80, 7.40 and 8.80m respectively in two-windrow mode. They are equipped with the MASTER DRIVE Gill gearbox that can handle tough conditions, as well as the STABIDRIVE system that keeps the machines stable on roads, bends and slopes.



Feel the benefit of great-quality raking

The wheel train is positioned close to the tines to ensure optimum plot contouring. With 3D articulation, the rotors can move in all directions. They adapt to variations in the land to ensure excellent forage pick-up.



Preserve your windrows

High ground clearance allows you to pass over windrows without deforming them.



Preserve the sward

The rotor is fitted so that the rear touches down before the front. In addition, the stabilising and weight-compensation system of the windrow curtain lowers the rotor gently to protect the sward.

ADAPT THE MACHINE TO YOUR NEEDS...

These machines can be set to form one or two windrows. This feature comes as standard on GA 7530 and GA 8830 models, and as an option on the GA 6930. Alongside the standard equipment, there are many optional-equipment possibilities to tailor your rake to the specificities of your farm.

Opt for a hydraulic rear windrow curtain.



Fit a front-rotor windrow curtain to produce two windrows.



Go for individual rotor lift.



Opt for wide wheels for transport and less compaction in the field.



Take advantage of the bogie axle on the rear rotor for better ground contouring. The GA 8830 can also be fitted with a bogie axle with directional wheels for the front rotor.



Control the hydraulic curtain with a circuit selector, and the 2-windrow function with a DA valve.



EXCLUSIVE FEATURES

Designed for intensive use and high-quality windrowing, semi-mounted GA 8030 gyrorakes integrate innovative features to meet your expectations.

KUHN EXCLUSIVES AT YOUR DISPOSAL

STABILIFT: exclusive kinematics that lift the rotor and lock it in a slightly inclined position. You'll save time and benefit from high ground clearance and hydraulic locking during transport.

STABIDRIVE: for increased machine stability during road transport, especially in turns, on roundabouts and when manoeuvring on uneven fields.

MASTER DRIVE GILL gearbox: for a reliable machine with a gearbox designed to cope with the highest levels of stress on the drive train.



3D suspension lock

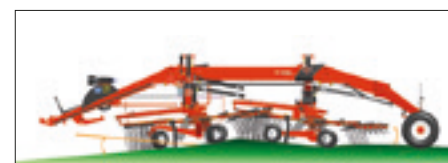
The rotor's 3D suspension system is equipped with a hydraulic cylinder that automatically locks the pendulum-type movements of the rotor whenever it is raised. This STABILIFT concept:

- preserves the sward because the tines do not scratch the ground when the rotors are lowered,
- increases stability due to the machine's lower centre of gravity,
- protects windrows through higher ground clearance,
- saves time with rotor lifting.



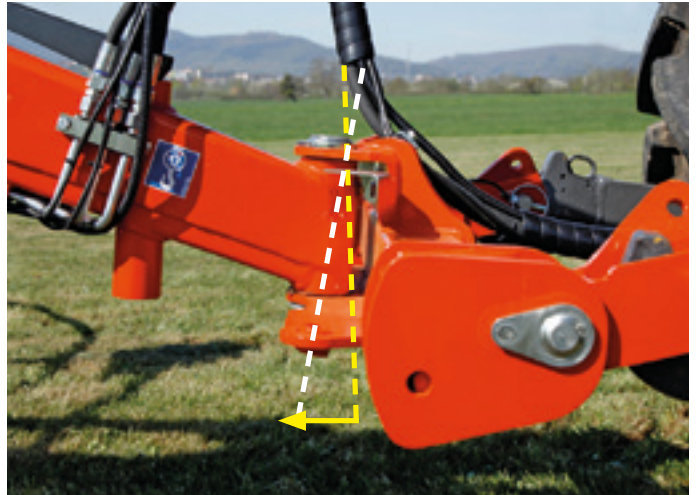
Passing over windrows without damage

The 51 cm clearance in one-windrow position and remarkable 76 cm in two-windrow position clearly show the advantage of STABILIFT for well-formed and ready-to-harvest windrows.



3D ground adaptation

STABILIFT also contributes to increasing rotor clearance for ground adaptation and excellent raking quality. Upward and downward movement ranges from an impressive +25cm to -30 cm.



Appreciate the machine's stability on roads, bends and slopes

It is the small details that make a big difference when it comes to safety on the road. The rotational axis of the hitch point between the tractor's lower links and the rake is not vertical but slightly inclined. This increases the pressure on the outer lower link and the rake's inner rear wheel and makes a huge difference in terms of stability and safety!



Hydraulic windrow width adjustment

The windrow curtain is adjustable as standard via a hydraulic cylinder.



Electric terminal

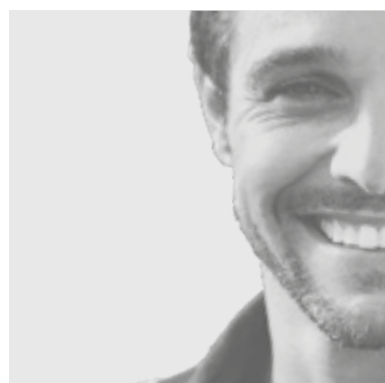
KGA 02L and KGA 11L terminals control the following functions: switching from working to transport position, selecting the delivery of one or two windrows, adjusting windrow width. In addition, the KGA 11L terminal enables you to control raking height from the cab.

	GA 6501 / GA 6501 P	GA 7501+	GA 7631	GA 8131	GA 8131 CL	GA 8731+	GA 9531+	
Working width (m)	5.65 - 6.40	Mechanical width setting: 6.90-7.40 or 6.70-7.20 in narrow position. Hydraulic width setting: 6.70 - 7.40	6.70 to 7.50	7.10 to 8.00		7.70 - 8.60	8.40 to 9.30	
Average windrow width (m)	1.25 - 2.00	Mechanical width setting: 1.30-1.90 or 1.10- 1.70 in narrow position. Hydraulic width setting: 1.10-1.90	1.30 - 2.20		1.40 to 2.30			
Attachment/category	2-point - pivoting lower links - cat. 2 / 3-point cat. 2 (GA 6501 P)	2-point - pivoting lower links - cat. 2	2-point - pivoting lower links / cat. 2 and 3N					
Rotor diameter (m)	2.65	3.25	3.20	3.40		3.65	4.00	
Number of arms per rotor	10	11		12		13	15	
Number of tines per arm	3	4						
Rotor drive	Mechanical		Two-stage reduction MASTER DRIVE GIII					
Rotor suspension	3D							
Number of wheels per rotor	3 wheels 16 x 6.50-8 (4 wheels - 6501 P)	4 wheels 16 x 6.50-8 (◇ - bogie)					6 wheels 16 x 6.50-8 (◀ : bogie)	
Rotor height adjustment	by crank handle		by crank handle (◇ : hydraulic)					
Tyres on chassis	10.0 / 80 x 12	10.0 / 75-15.30 or 13.0 / 55-16	11.50 / 80-15.30 or 380 / 55-17			15 / 55-17		
Working width of pick-up (m)	-				1.80	-		
Working height adjustment of pick-up	-				By shim-adjustable gauge wheels	-		
Pick-up drive	-				Hydraulic drive by tractor valve. Speed adjustable by flow limiter	-		
Transport width (m)	2.50	2.55	2.80			2.99		
Minimum transport height (m)	3.55	3.40	3.35	3.40		3.99	3.82	
Length (m)	5.15	5.60	5.90			6.57		
Tractor power requirement (kW/hp)	30 / 40	37 / 50	40 / 54	45 / 60	45 / 60	50 / 68	55 / 75	
Tractor hydraulic equipment	1 DA	1 SA (+1 DA with hydrau- lic width adjustment)	1 DA + 1 SA		1 SA +1 DA + 1 SA with free return	1 DA + 1 SA		
Tractor electric equipment	7-pin plug		7-pin plug (3-pin plug if KGA01S terminal)			7-pin plug + ISO 3-pin plug		
Lighting and signalling	◆							
Weight (kg)	1,260 / 1,200 (P)	1,610	1,820	1,925	2,165	2,250	2,400	

◆ standard ◇ option - not available

	GA 6002	GA 6930	GA 7530	GA 8830	GA 8030	GA 6632+	GA 7932+	GA 9032+
Working width - single windrow position (m)	3.00 - 5.80	6.30	6.90	7.80	7.30	3.55 - 6.45	4.05 - 7.45	4.65 - 8.60
Working width - two windrow position (m)	5.40	6.80	7.40	8.80	8.30	6.50	7.65	8.80
Average windrow width (m)	0.80 - 1.40	0.60 - 1.70			1.20 - 1.80			
Attachment/category	Trailed by drawbar on swing hitch	2-point on pivoting lower links and STABIDRIVE pivot - cat. 2 and 3N				Drawbar with parallelogram		
Rotor diameter (m)	2.65	2.90	3.20	3.65	3.40	2.90	3.40	4.00
Number of arms per rotor	10	11		13	12	11	12	15
Number of tines per arm	3	4						
Rotor drive	Mechanical	Two-stage reduction MASTER DRIVE GIII						
Rotor suspension	-	3D articulation			3D with STABILIFT lock in lift position	3D on rear rotor		
Number of wheels per front rotor	◆: 2 ◇: bogie axles or complementary axle	◆: 4 (pivoting) (2 rear wheels can be locked)		◆: 4 (pivoting) / ◇: 6		◆: 2 / ◇: bogie axles or complementary axle	◆: 4 (including bogie axle) / ◇: complementary axle	
Number of wheels per rear rotor	◆: 2 ◇: bogie axles or complementary axle	◆: 2 pivoting wheels + 2 fixed wheels / ◇: bogie axle				◆: 4 (including complementary axle) / ◇: bogie axle	◆: 6 (including bogie axle and complementary axle)	
Rotor height adjustment	By crank handle	By crank handle (◇: hydraulic)				By crank handle		
Rotor tyres	18 x 8.50-8	16 x 6.50-8				18 x 8.50-8		
Carrying frame tyres	-	11.50 / 80-15.30 or 380 / 55-17			15 / 55-17	-		
Additional support wheel on drawbar	◇	-				◇		
Transport width (m)	2.95	2.80		2.99		2.07	2.50	3.00
Minimum transport height (m)	-	3.50	3.62	3.99	3.85	-		
Length (m)	7.30	8.60		9.33	9.06	8.70	9.80	11.40
Minimum tractor power requirement (kW/hp)	30 / 40	30 / 40	45 / 60	50 / 70		40 / 55		44 / 60
Tractor hydraulic equipment	1 SA + 1 DA	1 SA	1 SA + 1 DA					
Tractor electric equipment	7-pin plug			7-pin plug + 1 ISO 3-pin plug				
Lighting and signalling	◆							
Weight (kg)	1,260	2,100	2,170	2,640	2,500	1,410	1,620	1,850

◆ standard ◇ option - not available



KUHN SERVICES*

KUHN sos order - Express spare parts service, 24/7**
KUHN protect+ - The choice of professionals!
KUHN i tech - For ever quicker repairs!
KUHN finance - Invest rationally!

MyKUHNS

THE LINK TO MY SUCCESS

MyKUHNS is your on-line customer space. Sign up now and discover how the exclusive services offered by MyKUHNS will facilitate the management of your fleet of KUHNS machines and terminals as well as help you maximize their performance. Once identified, on computer, smartphone or tablet, you will have access to parts catalogs, technical documentation and numerous connected services.



Check out the other rakes available at KUHNS



1. Mounted single-rotor - 2. Semi-mounted with 4 rotors - 3. Belt mergers - 4. Tedder-rakes

KUHNS SAS - 4 Impasse des Fabriques - BP 50060 - F-67706 Saverne CEDEX - FRANCE
KUHNS NORTH AMERICA, INC. - 1501 West Seventh Avenue - Brodhead, WI 53520 - USA
KUHNS FARM MACHINERY PTY. LTD - 313-325 Foleys Road - Deer Park, VIC, 3023 - AUSTRALIA
KUHNS FARM MACHINERY (U.K.) LTD - Stafford Park 7 - GB TELFORD/ SHROPS TF3 3BQ

To find your nearest KUHNS dealer,
visit our website www.kuhn.com

Information given in this document is only for information purposes and is non-contractual. Our machines are in compliance with regulations in force in the country of delivery. In our literature, and for improved illustration of certain details, some safety devices may not be in operating position. When operating these machines, these devices **must** be in position in accordance with the requirements indicated in the operator's manuals and pre-delivery instructions. RESPECT THE ROAD REGULATIONS IN FORCE AS WELL AS the tractor gross vehicle weight rating, its lift capacity and maximum load per axle and tyres. The tractor front AXLE load must always comply with the regulations of the country of delivery (In Europe, it must reach minimum 20 % of the tractor net weight). We reserve the right to change any designs, specifications or materials listed without further notice. Machines and equipment in this document can be covered by at least one patent and/or registered design. Trademarks cited in this document may be registered in one or several countries.

To protect the environment, this leaflet is printed on chlorine-free paper.
Printed in France - 920 014 EN - 10.23 - Copyright 2023 KUHNS

