



Reversible plough
MASTER 113



MASTER 113



Summary

- 04** A light yet robust plough easy to adjust for different tractors and ploughing conditions
 - 06** High technology design and manufacture
 - 08** Ploughing bodies, points and skimmers
 - 10** The wheels
 - 11** Specifications
-

MASTER 113

Reversible plough

THE KUHN PLOUGH

THE FUTURE OF FARMING LIES IN COMPETITIVENESS AND PROFITABILITY. THE MASTER RANGE CONCEPT WITH ITS ADVANCED FEATURES WILL CONTRIBUTE TO A QUICK RETURN ON YOUR INVESTMENT.

THE KUHN PLOUGH WILL ALLOW YOU TO :



- Maintain a high quality soil structure with an efficient burial of organic matter and an even aggregate spread throughout the soil profile - crop yields will be increased.
- Have at your disposal a wide range of working width settings and an excellent overall manoeuvrability - "in field" costs will be reduced.
- Benefit from a number of technological innovations such as the reinforced box section, the variable width, the plough structure protection systems (Hydraulic non-stop or traction bolt) - the working life of the plough is increased and maintenance costs reduced.
- Profit from a renowned reliability and long working life allowing you to work throughout the day without interruption - your plough will also keep a high second-hand value.

Opt for a KUHN plough - because obtaining high yields and optimizing financial results all starts with high quality ploughing.

A LIGHT YET ROBUST PLOUGH EASY TO ADJUST FOR DIFFERENT TRACTORS AND PLOUGHING CONDITIONS

The Multi-Master 113 is the plough to meet all your demands: robust, reliable and easy to set-up. With good underbeam and point to point clearances the plough can cope easily with large quantities of trash.

• **Easy adjustments include :**

- Setting the plough offsetting in relation to the tractor tyre spacing by simple pin positions.
- Offsetting and angling combined to give perfect plough alignment for any given 1st furrow setting.



Beam with high strength linkage to headstock

- Beam section 120 x 120

The beam is reinforced in the area surrounding the 1st furrow for extra strength and further supported by a tubular drawbar.

All adjustments are simple and straight forward :

One mechanical turnbuckle adjusts the combined offsetting/angling.

This can be fitted with an optional hydraulic ram adjuster on the 4E/5 furrow model.



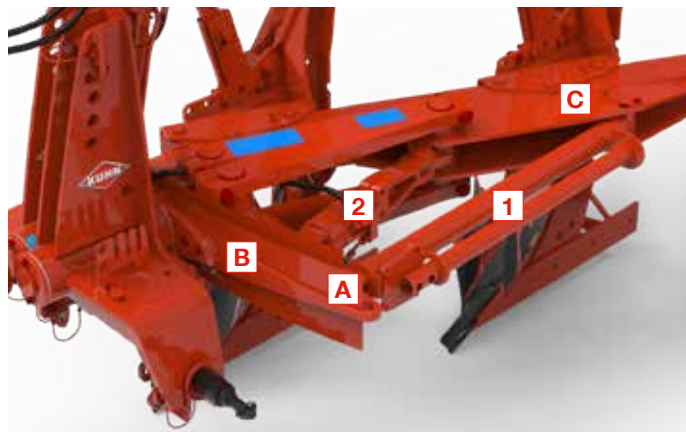
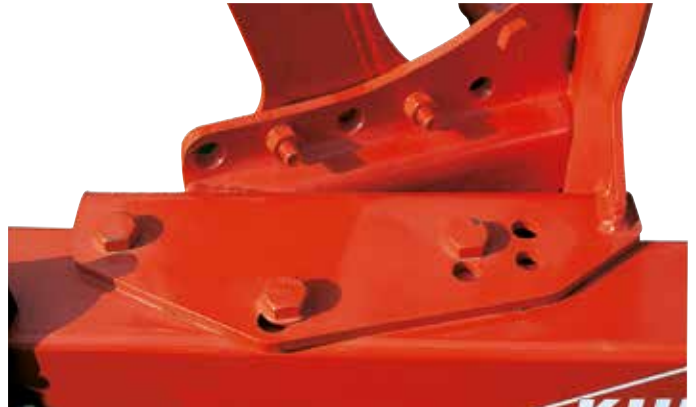
EXCLUSIVE

Multiple widths 14", 16" and 18"

The working width can be quickly altered by simply pivoting the plough legs on the beam and re-bolting in the new position hole. The leg is fixed to the beam by 3 bolts for added strength and reliability.

Combined offsetting/angling

The optional ram **2** allows adjustment in one operation. This patented system makes for quicker and easier plough adjustments.



One piece headstock

- Quick hitch cross-shaft.
- High strength heat treated turnover shaft
 - 85mm diameter on 3E/4 furrow
 - 105mm on 4E/5 furrow.
- Vertical levelling adjustment by turnscrew.
- Sealed integrated tool box with spanners and exchange traction bolts.

Adjustment of the 3E/4 models

The connecting rod **1** ensures a precise adjustment to the tire gaps.

Pinning **A** for large tire spacing.

Pinning **B** for small tire spacing and beam orientation.

Pinning **C** for the chosen cutting width 14", 16" or 18".



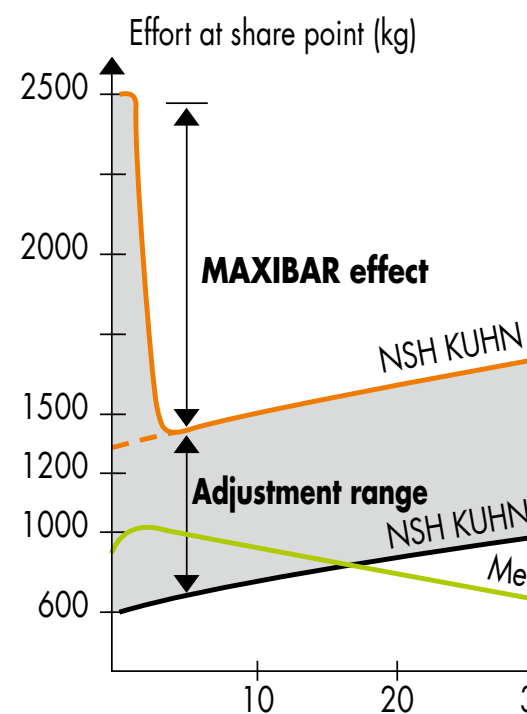
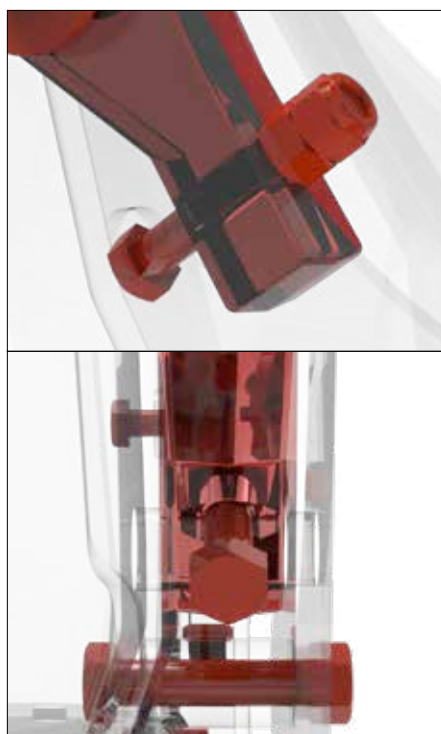
HIGH TECHNOLOGY DESIGN AND MANUFACTURE

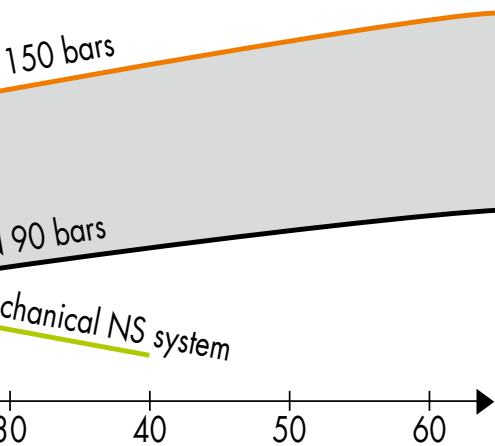


T-safety

Tensile breakage at a share point load of 3,000 kg avoids too frequent stresses on the safety device.

- No shearing effect as the bolt is only loaded in tension.
- No ovality of the support nut.
- No jamming of the Ø 16 mm bolt after breakage, it is very easy to replace.
- The ploughing depth is maintained despite the triggering of the T safety device.





NSH safety

The general design of non-stop safety systems allows for an increasing or decreasing release curve upon encountering the obstacle.

As the body is lifted, the resistance to the tip increases, giving it more energy to return to the ground.

The integration of all the elements increases the flow channel of the soil and residues. Exceptional clearances : + 70 cm vertically and 20 cm laterally, on both sides ; the highest values on the market.

Weight saving : - 25 kg / ploughing body compared to a mechanical non stop.

- **VARIBAR option** : allows the pressure at the share tip to be varied from the tractor while ploughing; immediate adaptation to working conditions.
- **MAXIBAR option** : instantaneous overtrimming (600 to 2500 kg) of the safety devices to work on very heavy soils.

PLOUGHING BODIES, POINTS AND SKIMMERS

CLASSIC TYPE PLOUGH BODIES

The experience acquired by KUHN in the world of ploughing for almost 120 years has enabled the development of a range of plough bodies adapted to all the needs of farmers. Made from noble and robust materials, KUHN plough bodies are designed to guarantee optimal penetration in all soil conditions with maximum life span.



L Body

Versatile body for mounted or discarded ploughing depending on the working speed. Large clearance at the bottom of the furrow for the passage of wide tires.

- Working depth between 18 and 35 cm
- Pneumatic width: 710 mm



T Body

Shallow to medium depth moldboard plowing. Suitable for the use of wide tires.

- Working depth between 12 and 28 cm
- Pneumatic width: 710 mm



N Body

Cylindrical in the front part and helical in the rear part, it has a very low draught.

- Working depth from 15 to 30 cm
- Pneumatic width : 650 mm



HC Body

Deep mouldboard ploughing, suitable for sticky soils and «competition» type ploughing. Available in plastic mouldboard for sticky soil.

- Working depth between 15 and 30 cm
- Pneumatic width : 650 mm



P Body

Cylindrical in the front part and helical in the rear part, it has a very low draught.

- Working depth from 15 to 30 cm
- Pneumatic width : 650 mm

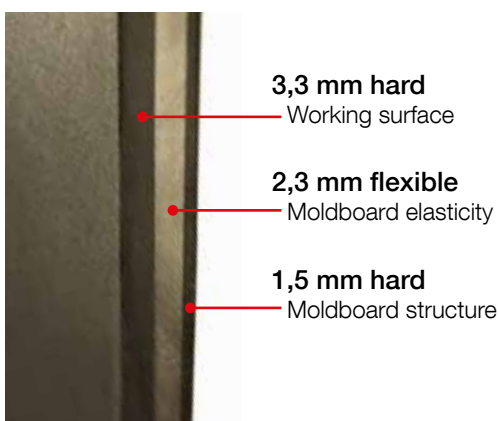


VP Slatted Body

Consists of interchangeable and independent blades. It reduces the adherence of heavy and wet soils.

- Working depth between 20 and 30 cm
- Pneumatic width: 650 mm

MOULDBOARDS WITH UNEQUAL LAYER TRIPLEX STEEL



Increase the life of your mouldboards by 40%

TRIPLEX mouldboards have uneven layers with more thickness in the working area and a softer layer in the middle to ensure the best compromise between wear resistance and ploughing quality.

Your KUHN plough equipped with TRIPLEX mouldboards gives you one of the lowest wear costs per hectare on the market.

6 reasons to choose KUHN forged parts:

- 1. The type of steel:** it is the best compromise between hardness (wear resistance) and resilience (impact resistance).
- 2. The heat treatment:** it prevents breakage and makes the parts stronger.
- 3. Ease of assembly:** stamping allows for consistent and homogeneous manufacturing with precise tolerances and a longer lifespan.
- 4. Material distribution:** the material is concentrated in the areas where it is needed to increase the life of your parts.
- 5. 20% longer life than standard parts:** KUHN forged parts have a 20% longer life than standard parts.
- 6. A dense distribution network:** optimal availability and short delivery times. You are sure to have minimum downtime on your sites and optimise your costs.

FORGED AND TREATED TIPS



MARATHON

Special heat treated forged steel.
Reversible for maximum efficiency.
Featuring a step giving better landside protection.



OLYMPIC

Special heat treated forged steel.
Reversible for maximum efficiency. More pronounced form at wearing zones on the point for longer life and better protection of the landside. Point is self sharpening for good ground penetration at all times.



SUPER MARATHON

Special heat treated forged steel fitted with a tungsten carbide tip. High wear resistance. Four to five times the life of a traditional share point. A sharp working edge is maintained for excellent ground penetration.

SKIMMERS

The role of the skimmer is essential since it allows to cut the strip of soil to bury the organic manure in the bottom of the furrow before the passage of the body.

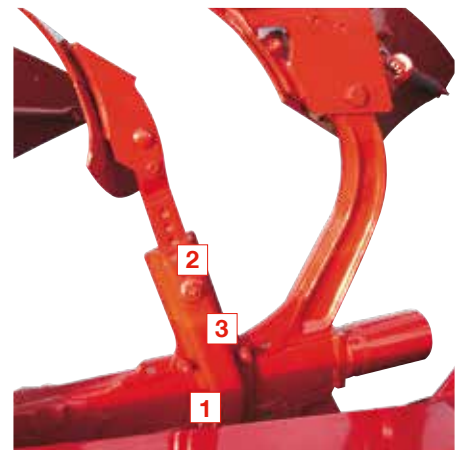
Independent shavers with total safety

Sleeve mounting : permanent hold of the shaver, no risk of sliding or rotating around the shaft.

Simple and precise adjustment:

- 1. Longitudinal :** 3 positions to locate the burial.
- 2. Height :** by adjustment holes with anti-loss pin.
- 3. Lateral :** for a perfect adaptation to circular coulters.

Security by bolt ensuring a clean break at 1800 kg at the share tip.



All purpose ZX skimmer

Well adapted to ploughing on cereal or maize stubbles.

- ZXL : large share
- ZXE : small share



Helicoidal ZH skimmer

Helicoidal skimmer for deep trash burial.
Well adapted to grassland ploughing.



ZRL high capacity skimmer

High capacity skimmer for trash incorporation throughout the soil profile.
Excellent straw and maize trash burial.

THE WHEELS

Wheels have several functions on the plough : regulation of the working depth, transport or both. It is therefore necessary to choose the wheel that meets your needs in terms of ploughing. There are many possible implementations on the frame to allow for optimal positioning in all conditions of use.



The side combined wheels

- **Rear combined wheel :** Ø 690 mm with studs. It allows the transition from transport to work in two operations. Standard suspension for transport.
- **Lateral combined wheel :** Wheel Ø 780x345 mm or Ø 690x320 mm. Only one wheel for the digging and transport functions.

Transport wheels

- **Transport wheel with suspension :** you can safely transport your plough thanks to a transport wheel equipped with a suspension **1**, mounted at the rear, which protects your frame and your tractor. By pulling the handle **2**, the wheel can be tilted into the transport position.

Specifications

Model	Beam configuration E : Extensible	Max authorized tractor power (kW/hp)	Traction bolt leg protection				NSH leg protection			
			Weight* (kg)	Working width (inches/cm)	Clearances (cm)		Weight* (kg)	Working width (inches/cm)	Clearances (cm)	
					Under beam	Point to point			Under beam	Point to point
MULTI-MASTER 113	3 E	66/90	795	14", 16" and 18" 35, 40 and 45 cm	70 and 75	90 or 102	940	14", 16" and 18" 35, 40 and 45 cm	70	90
	4 (3+1)	88/120	985				1160			
	4 E		1158				1363			
	5 (4+1)	110/150	1370				1605			

Information given as an indication and varies according to equipment and country of delivery.



KUHN PARTS



Designed and manufactured to rival time. KUHN foundries and forge as well as a high-level manufacturing process allow the production of spare parts to defy time. You can truly rely on our know-how and our genuine parts. Farmers benefit from our client support and logistics services via any KUHN PARTS warehouse, which provide quick and reliable repair solutions in cooperation with your nearest authorized KUHN dealer.



KUHN SERVICES*

KUHN sos order - Express spare parts service 24/7
KUHN protect+ - The choice of professionals!
KUHN i tech - For ever quicker repairs!
KUHN finance - Invest rationally!

*Not all services and equipment are available in every country.

MyKUHN

THE LINK TO MY SUCCESS

MyKUHN is your on-line customer space. Sign up now and discover how the exclusive services offered by MyKUHN will facilitate the management of your fleet of KUHN machines and terminals as well as help you maximise their performance. Once identified, on computer, smartphone or tablet, you will have access to parts catalogs, technical documentation and numerous connected services.



Discover the range of KUHN ploughs



1. MASTER 103 - 2. MASTER 113 - 3. MASTER 123 - 4. MASTER 153 - 5. MASTER L - 6. MASTER 183

KUHN-HUARD SAS - Zone Horizon - 2, Rue de Québec - F-44110 CHATEAUBRIANT - France

For more information about your nearest KUHN dealer, visit our website www.kuhn.com

Information given in this document is only for information purposes and is non-contractual. Our machines are in compliance with regulations in force in the country of delivery. In our literature, and for improved illustration of certain details, some safety devices may not be in operating position. When operating these machines, these devices must be in position in accordance with the requirements indicated in the operator's manuals and assembly manuals. Respect the tractor gross vehicle weight rating, its lift capacity and maximum load per axle and tyres. The tractor front axle load must always comply with the regulations of the country of delivery (In Europe, it must reach minimum 20% of the tractor net weight). We reserve the right to change any designs, specifications or materials listed without further notice. Machines and equipment in this document can be covered by at least one patent and/or registered design. Trademarks cited in this document may be registered in one or several countries.

To protect the environment, this leaflet is printed on chlorine-free paper.
Printed in France - 950014 EN - 02.23 - Copyright 2023 KUHN

